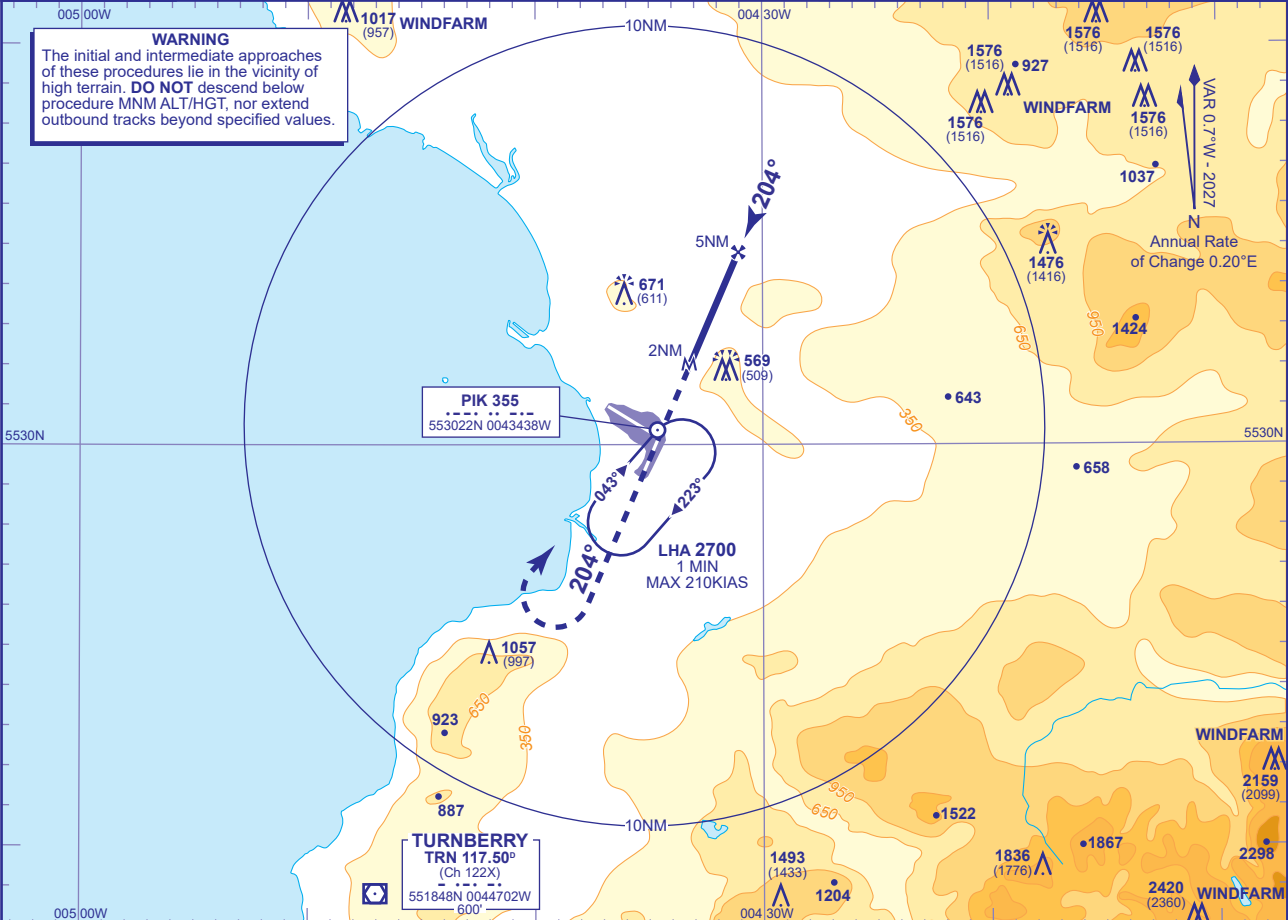


**PRESTWICK**  
**SRA RTR 2NM**  
**RWY 20**  
(ACFT CAT A,B,C,D)



APP	129.450	PRESTWICK APPROACH	AD ELEVATION	65	<b>SRA RTR 2NM RWY 20</b> (ACFT CAT A,B,C,D)
TWR	118.150, 127.155	PRESTWICK TOWER	THR ELEVATION	60	
RAD	129.450, 124.630	PRESTWICK RADAR	OBSTACLE ELEVATION <b>2420 AMSL</b> (2360) (ABOVE THR)		
ATIS	121.130	PRESTWICK INFORMATION			
			BEARINGS ARE MAGNETIC		TRANSITION ALTITUDE <b>6000</b>



RECOMMENDED PROFILE Gradient 6.39%, 390FT/NM				
NM	5.0	4.0	3.0	2.0
ALT(HGT)	2000(1940)	1610(1550)	1220(1160)	840(780)

